

AGLITE ULTIMA Thermal Bridging Values



Linear Thermal Transmittance (Ψ) and Temperature Factor (f -value)

Certificate No: E1-AL-2018

Issued : 2 February 2022

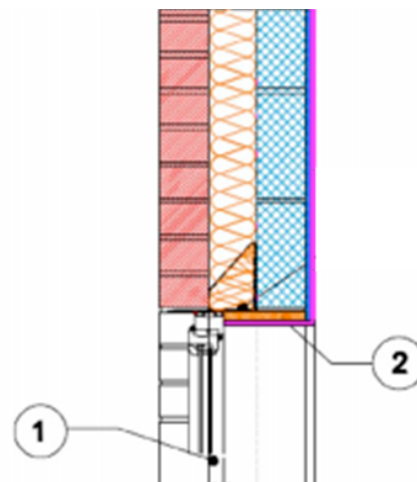
Issued by Plasmor Ltd

Steel lintel with perforated base plate (Table K1 Ref E1)

Calculated ψ -value 0.294 – 0.307 W/mK

Key Points

1. Minimum frame overlap to be 30mm
2. Install insulation to soffit – 25mm
 $\lambda=0.022$



Calculated ψ -values and f -values

Cavity wall insulation	Plasmor Aglite ($\lambda=0.31$) inner leaf, plasterboard on dabs	
	Ψ -value W/m·k	f -value
100mm $\lambda=0.032$	0.294	0.889
150mm $\lambda=0.032$	0.303	0.884
50mm $\lambda=0.022$ (+ 50mm low e cavity)	0.284	0.888
100mm $\lambda=0.022$ (+ 50mm low e cavity)	0.307	0.884

The f -value should be above 0.75 to minimise the risk of mould growth in dwellings.

Linear Thermal Transmittance (Ψ) and Temperature Factor (f -value)

Certificate No: E2-AL-2018

Issued : 2 February 2022

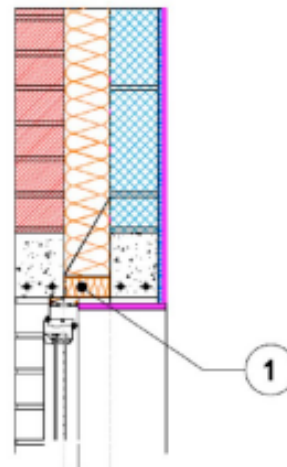
Issued by Plasmor Ltd

Independent Concrete lintel (Table K1 Ref E2)

Calculated ψ -value = 0.032 – 0.042 W/mK

Key Points

1. Close cavity with insulated cavity closer $\lambda=0.034$
2. Minimum frame overlap to be 30mm



Calculated ψ -values and f -values

Cavity Wall insulation	Plasmor Aglite ($\lambda=0.31$) inner leaf, plasterboard on dabs	
	Ψ -value W/m·k	f -value
100mm $\lambda=0.032$	0.032	0.898
150mm $\lambda=0.032$	0.035	0.893
50mm $\lambda=0.022$ (+ 50mm low e cavity)	0.038	0.890
100mm $\lambda=0.022$ (+ 50mm low e cavity)	0.042	0.886

The f -value should be above 0.75 to minimise the risk of mould growth in dwellings.

Linear Thermal Transmittance (Ψ) and Temperature Factor (f -value)

Certificate No: E3-AL-2018

Issued : 2 February 2022

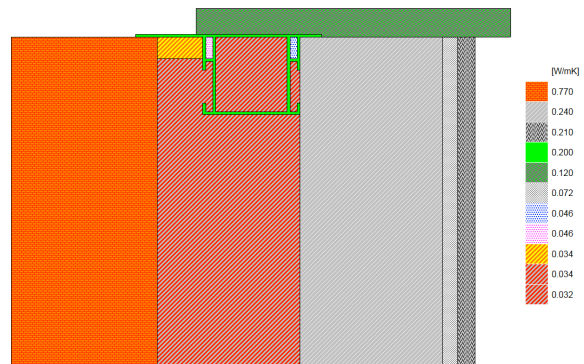
Issued by Plasmor Ltd

Sill (Table K1 Ref E3)

Calculated ψ -value = 0.012 – 0.035 W/mK

Key Points

1. Install a proprietary cavity closer (see options below)
2. Minimum frame overlap to be 30mm



Calculated ψ -values and f -values

Thermabate cavity closer*	Plasmor Aglite ($\lambda=0.31$) inner leaf, plasterboard on dabs	
	Ψ -value W/m·k	f -value
Cavity wall insulation		
100mm $\lambda=0.032$	0.012	0.921
150mm $\lambda=0.032$	0.026	0.881
50mm $\lambda=0.022$ (+ 50mm low e cavity)	0.016	0.916
100mm $\lambda=0.022$ (+ 50mm low e cavity)	0.034	0.867

Cavalok cavity closer*	Plasmor Aglite ($\lambda=0.31$) inner leaf, plasterboard on dabs	
Cavity wall insulation	Ψ-value W/m\cdotk	f-value
100mm $\lambda=0.032$	0.016	0.910
150mm $\lambda=0.032$	0.029	0.864
50mm $\lambda=0.022$ (+ 50mm low e cavity)	0.024	0.892
100mm $\lambda=0.022$ (+ 50mm low e cavity)	0.035	0.857

**Following manufacturer's installation guidelines for cavity closer*

The f-value should be above 0.75 to minimise the risk of mould growth in dwellings.

Linear Thermal Transmittance (Ψ) and Temperature Factor (f -value)

Certificate No: E4-AL-2018

Issued : 2 February 2022

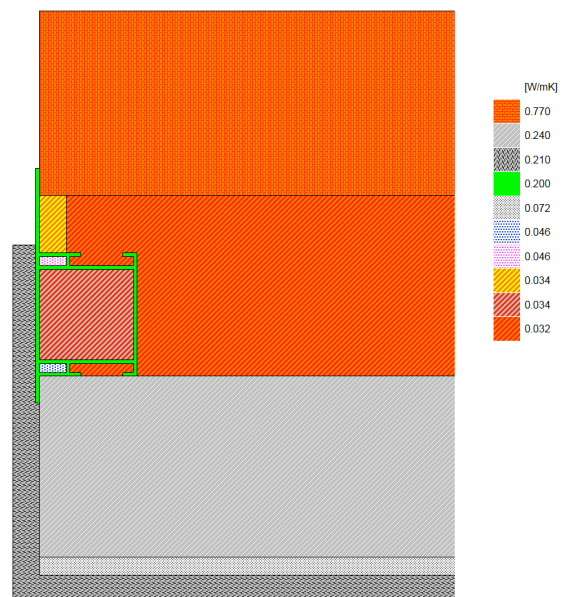
Issued by Plasmor Ltd

Jamb (Table K1 Ref E4)

Calculated ψ -value = 0.011 – 0.040 W/mK

Key Points

1. Install a proprietary cavity closer (see options below)
2. Minimum frame overlap to be 30mm



Calculated ψ -values and f -values

Thermabate cavity closer*	Plasmor Aglite ($\lambda=0.31$) inner leaf, plasterboard on dabs	
Cavity wall insulation	Ψ -value W/m·k	f -value
100mm $\lambda=0.032$	0.011	0.945
150mm $\lambda=0.032$	0.030	0.876
50mm $\lambda=0.022$ (+ 50mm low e cavity)	0.014	0.937
100mm $\lambda=0.022$ (+ 50mm low e cavity)	0.039	0.866

Cavalok cavity closer*	Plasmor Aglite ($\lambda=0.31$) inner leaf, plasterboard on dabs	
Cavity wall insulation	Ψ-value W/m\cdotk	f-value
100mm $\lambda=0.032$	0.015	0.935
150mm $\lambda=0.032$	0.034	0.865
50mm $\lambda=0.022$ (+ 50mm low e cavity)	0.019	0.927
100mm $\lambda=0.022$ (+ 50mm low e cavity)	0.040	0.858

**Following manufacturer's installation guidelines for cavity closer*

The f-value should be above 0.75 to minimise the risk of mould growth in dwellings.

Linear Thermal Transmittance (Ψ) and Temperature Factor (f -value)

Certificate No: E5-AL-2018

Issued : 2 February 2022

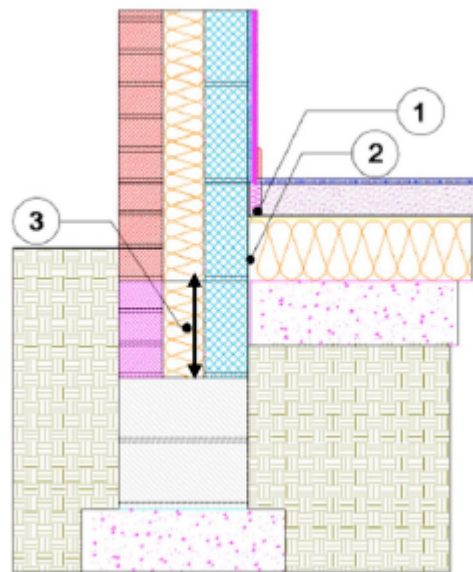
Issued by Plasmor Ltd

Solid concrete ground floor – insulation above slab (Table K1 Ref E5)

Calculated ψ -value = 0.073 – 0.080 W/mK

Key Points

1. Install perimeter edge insulation
 $\lambda=0.022$
2. Ensure the floor insulation abuts the external wall
3. Continue the cavity wall insulation a minimum of 125mm below the top of the slab



Calculated ψ -values and f -values

Cavity wall insulation	100mm Floor insulation ($\lambda=0.022$)	
	Ψ -value W/m·k	f -value
100mm $\lambda=0.032$	0.080	0.838
150mm $\lambda=0.032$	0.074	0.926
50mm $\lambda=0.022$ (+ 50mm low e cavity)	0.079	0.823
100mm $\lambda=0.022$ (+ 50mm low e cavity)	0.073	0.926

Cavity wall insulation	150mm Floor insulation ($\lambda=0.022$)	
	Ψ -value W/m \cdot k	f-value
100mm $\lambda=0.032$	0.077	0.920
150mm $\lambda=0.032$	0.074	0.926
50mm $\lambda=0.022$ (+ 50mm low e cavity)	0.077	0.917
100mm $\lambda=0.022$ (+ 50mm low e cavity)	0.073	0.926

The f-value should be above 0.75 to minimise the risk of mould growth in dwellings.

Linear Thermal Transmittance (Ψ) and Temperature Factor (f -value)

Certificate No: E5-AL-2018

Issued : 2 February 2022

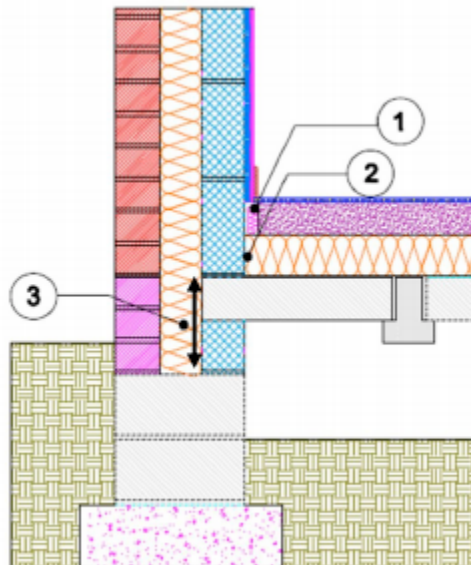
Issued by Plasmor Ltd

Suspended beam and block floor – insulation above (Table K1 Ref E5)

Calculated ψ -value = 0.064 – 0.070 W/mK

Key Points

1. Install perimeter edge insulation $\lambda=0.022$
2. Ensure the floor insulation abuts the external wall
3. Continue the cavity wall insulation a minimum of 225mm below the top of the floor block



Calculated ψ -values and f -values

100mm Floor insulation ($\lambda=0.022$) Beams perpendicular to external wall (worst case)	Plasmor Aglite ($\lambda=0.31$) beam and block floor	
Cavity wall insulation	Ψ -value W/m·k	f -value
100mm $\lambda=0.032$	0.069	0.923
150mm $\lambda=0.032$	0.070	0.929
50mm $\lambda=0.022$ (+ 50mm low e cavity)	0.069	0.921
100mm $\lambda=0.022$ (+ 50mm low e cavity)	0.069	0.930

The f -value should be above 0.75 to minimise the risk of mould growth in dwellings.

Calculated ψ -values and f-values

150mm Floor insulation ($\lambda=0.022$) Beams perpendicular to external wall (worst case)	Plasmor Aglite ($\lambda=0.31$) beam and block floor	
Cavity wall insulation	Ψ-value W/m·k	f-value
100mm $\lambda=0.032$	0.064	0.928
150mm $\lambda=0.032$	0.070	0.934
50mm $\lambda=0.022$ (+ 50mm low e cavity)	0.070	0.925
100mm $\lambda=0.022$ (+ 50mm low e cavity)	0.069	0.935

The f-value should be above 0.75 to minimise the risk of mould growth in dwellings.

Linear Thermal Transmittance (Ψ) and Temperature Factor (f -value)

Certificate No: E6-AL-2018

Issued : 2 February 2022

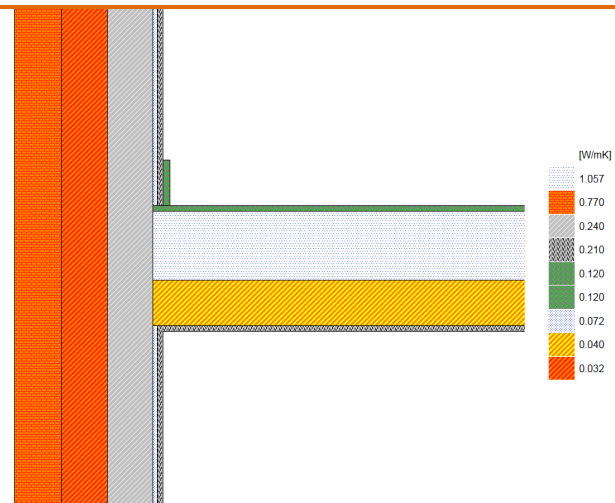
Issued by Plasmor Ltd

Intermediate floor within a dwelling (Table K1 Ref E6)

Calculated ψ -value = -0.008 – 0.000 W/mK

Key Points

1. Continue wall insulation across floor abutment zone



Calculated ψ -values and f -values

Timber floor joists – no insulation between		
Cavity wall insulation	Ψ -value W/m·k	f -value
100mm $\lambda=0.032$	0.000	0.964
150mm $\lambda=0.032$	0.000	0.974
50mm $\lambda=0.022$ (+ 50mm low e cavity)	0.000	0.960
100mm $\lambda=0.022$ (+ 50mm low e cavity)	-0.001	0.976

The f -value should be above 0.75 to minimise the risk of mould growth in dwellings.

Calculated ψ -values and f-values

Timber floor joists – 100mm acoustic mineral wool between ($\lambda=0.040$)		
Cavity wall insulation	Ψ-value W/m\cdotk	f-value
100mm $\lambda=0.032$	-0.007	0.953
150mm $\lambda=0.032$	-0.002	0.968
50mm $\lambda=0.022$ (+ 50mm low e cavity)	-0.008	0.955
100mm $\lambda=0.022$ (+ 50mm low e cavity)	-0.002	0.970

The f-value should be above 0.75 to minimise the risk of mould growth in dwellings.

Linear Thermal Transmittance (Ψ) and Temperature Factor (f -value)

Certificate No: E7-AL-2018

Issued : 2 February 2022

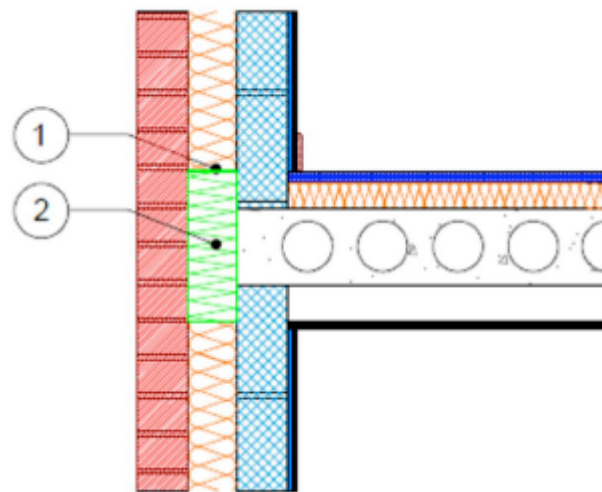
Issued by Plasmor Ltd

Party floor between dwellings (block of flats) – concrete (Table K1 Ref E7)

Calculated ψ -value = -0.023 – 0.003 W/mK

Key Points

1. Carry wall insulation across floor abutment zone or up to proprietary fire stop if used
2. Proprietary fire stop to be same thermal conductivity as wall insulation



Calculated ψ -values and f -values

Hollowcore plank separating floor		
Cavity wall insulation	Ψ -value W/m·k*	f -value
100mm $\lambda=0.032$	-0.023	0.962
150mm $\lambda=0.032$	-0.016	0.973
50mm $\lambda=0.022$ (+ 50mm low e cavity)	0.003	0.957
100mm $\lambda=0.022$ (+ 50mm low e cavity)	-0.016	0.974

*Psi value is applied to both sides of the party floor

The f -value should be above 0.75 to minimise the risk of mould growth in dwellings.

Linear Thermal Transmittance (Ψ) and Temperature Factor (f -value)

Certificate No: E10-AL-2018

Issued : 2 February 2022

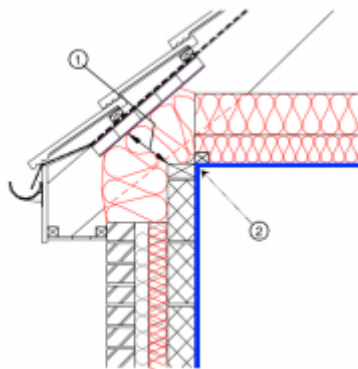
Issued by Plasmor Ltd

Eaves (insulation at ceiling level) (Table K1 Ref E10)

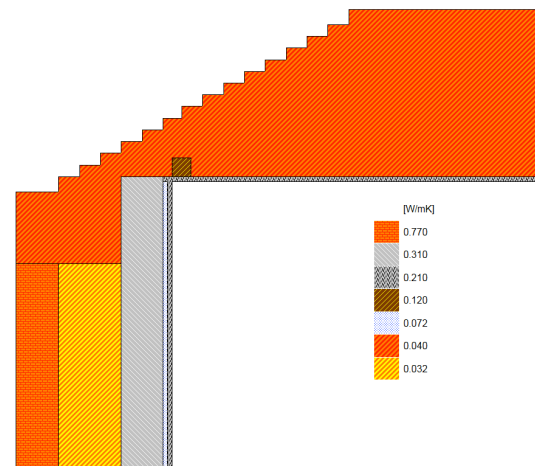
Calculated ψ -value = 0.036 – 0.123 W/mK

Key Points

1. Ensure continuity of the insulation between the wall plate and eaves, fully fill void with insulation



Accredited (Indicative) Detail Number: MCI-RE-01



Calculated ψ -values and f -values

400mm mineral wool insulation to ceiling ($\lambda=0.044$)		
Cavity wall insulation	Ψ -value W/m \cdot k	f -value
100mm $\lambda=0.032$	0.039	0.939
50mm $\lambda=0.022$ (+ 50mm low e cavity)	0.039	0.938

400mm mineral wool insulation to ceiling ($\lambda=0.040$)		
Cavity wall insulation	Ψ-value W/m\cdotk	f-value
100mm $\lambda=0.032$	0.08	0.906
150mm $\lambda=0.032$	0.119	0.909
50mm $\lambda=0.022$ (+ 50mm low e cavity)	0.105	0.905
100mm $\lambda=0.022$ (+ 50mm low e cavity)	0.123	0.908

450mm mineral wool insulation to ceiling ($\lambda=0.040$)		
Cavity wall insulation	Ψ-value W/m\cdotk	f-value
100mm $\lambda=0.032$	0.036	0.942
50mm $\lambda=0.022$ (+ 50mm low e cavity)	0.036	0.942

The f-value should be above 0.75 to minimise the risk of mould growth in dwellings.

Linear Thermal Transmittance (Ψ) and Temperature Factor (f -value)

Certificate No: E11-AL-2018

Issued : 2 February 2022

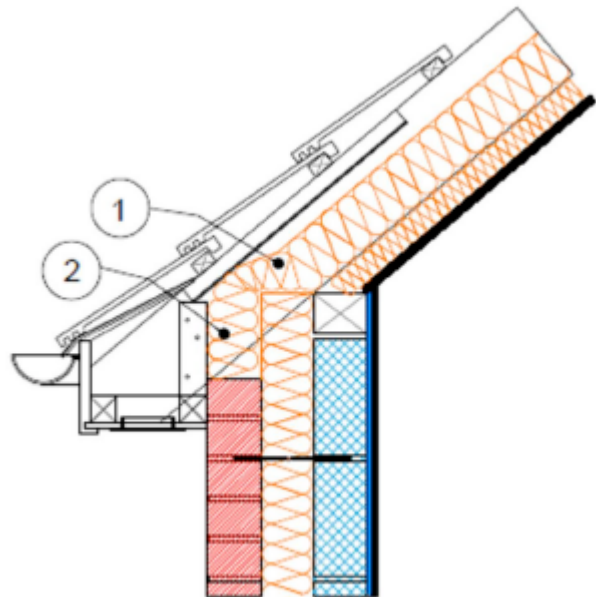
Issued by Plasmor Ltd

Eaves (insulation at rafter level) (Table K1 Ref E11)

Calculated ψ -value = -0.006 – 0.007 W/mK

Key Points

1. Ensure continuity of insulation between the roof and external wall
2. Fully fill the void with insulation



Calculated ψ -values and f -values

100mm insulation ($\lambda=0.022$) between the rafters and 50mm insulation ($\lambda=0.022$) below the rafters		
Cavity wall insulation	Ψ -value W/m \cdot k	f -value
100mm $\lambda=0.032$	-0.004	0.947
150mm $\lambda=0.032$	0.005	0.950
50mm $\lambda=0.022$ (+ 50mm low e cavity)	-0.006	0.946
100mm $\lambda=0.022$ (+ 50mm low e cavity)	0.007	0.950

The f -value should be above 0.75 to minimise the risk of mould growth in dwellings.

Linear Thermal Transmittance (Ψ) and Temperature Factor (f -value)

Certificate No: E12-AL-2018

Issued : 2 February 2022

Issued by Plasmor Ltd

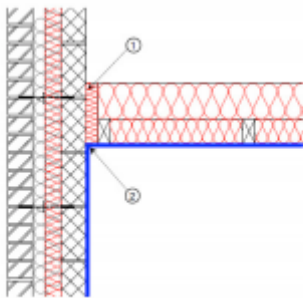
Gable (insulation at ceiling level) (Table K1 Ref E12)

Calculated ψ -value = 0.073 – 0.082 W/mK

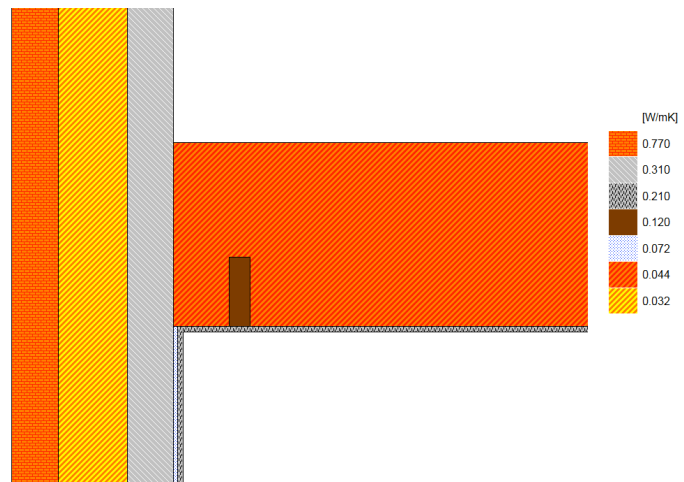
Key Points

1. Pack insulation between the last truss/joist and the external wall

2. Continue cavity wall insulation to the top of the gable wall



Accredited (indicative) Detail Number: BCI-RG-01



Calculated ψ -values and f -values

400mm mineral wool insulation to plane ceiling ($\lambda=0.040$)		
Cavity wall insulation	Ψ -value W/m \cdot k	f -value
100mm $\lambda=0.032$	0.080	0.913
150mm $\lambda=0.032$	0.075	0.925
50mm $\lambda=0.022$ (+ 50mm low e cavity)	0.082	0.908
100mm $\lambda=0.022$ (+ 50mm low e cavity)	0.073	0.927

Linear Thermal Transmittance (Ψ) and Temperature Factor (f -value)

Certificate No: E13-AL-2018

Issued : 2 February 2022

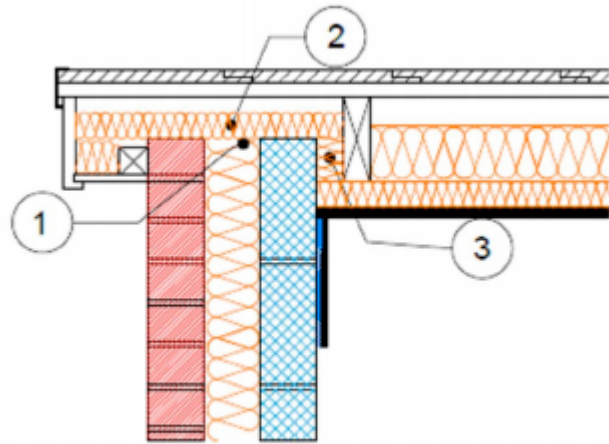
Issued by Plasmor Ltd

Gable (insulation at rafter level) (Table K1 Ref E13)

Calculated ψ -value = 0.072 – 0.074 W/mK

Key Points

1. Pack insulation between the final rafter and the external wall
2. Continue cavity wall insulation to the top of the gable wall
3. Fill the void above the wall head with insulation



Calculated ψ -values and f -values

100mm insulation ($\lambda=0.022$) between the rafters and 50mm insulation ($\lambda=0.022$) below the rafters		
Cavity wall insulation	Ψ -value W/m·k	f -value
100mm $\lambda=0.032$	0.073	0.916
150mm $\lambda=0.032$	0.074	0.925
50mm $\lambda=0.022$ (+ 50mm low e cavity)	0.073	0.913
100mm $\lambda=0.022$ (+ 50mm low e cavity)	0.072	0.928

Linear Thermal Transmittance (Ψ) and Temperature Factor (f -value)

Certificate No: E16-AL-2018

Issued : 2 February 2022

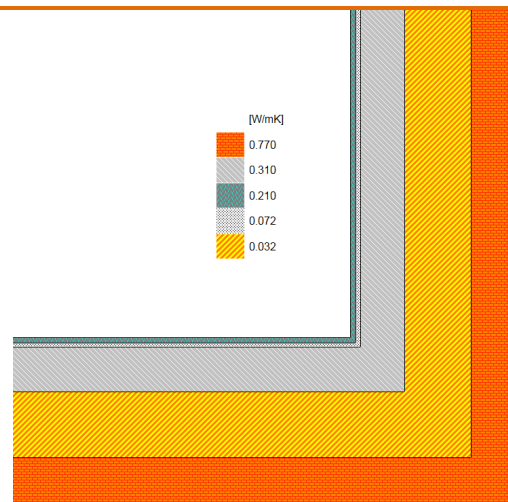
Issued by Plasmor Ltd

Normal corner (Table K1 Ref E16)

Calculated ψ -value = 0.042 – 0.057 W/mK

Key Points

1. Ensure continuity of insulation at the corner



Calculated ψ -values and f -values

Plasmor Aglite ($\lambda=0.31$) inner leaf, plasterboard on dabs		
Cavity wall insulation	Ψ -value W/m·k	f -value
100mm $\lambda=0.032$	0.055	0.913
150mm $\lambda=0.032$	0.047	0.933
50mm $\lambda=0.022$ (+ 50mm low e cavity)	0.057	0.906
100mm $\lambda=0.022$ (+ 50mm low e cavity)	0.042	0.938

The f -value should be above 0.75 to minimise the risk of mould growth in dwellings.

Linear Thermal Transmittance (Ψ) and Temperature Factor (f -value)

Certificate No: E17-AL-2018

Issued : 2 February 2022

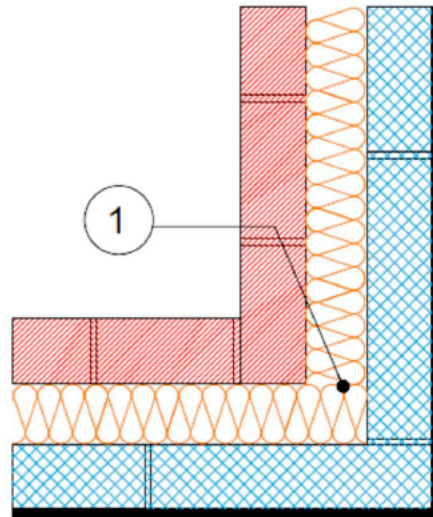
Issued by Plasmor Ltd

Corner (inverted) (Table K1 Ref E17)

Calculated ψ -value = -0.110 to -0.079 W/mK

Key Points

1. Ensure continuity of insulation at the corner



Calculated ψ -values and f -values

Plasmor Aglite ($\lambda=0.31$) inner leaf, plasterboard on dabs		
Cavity wall insulation	Ψ -value W/m \cdot k	f -value
100mm $\lambda=0.032$	-0.106	0.967
150mm $\lambda=0.032$	-0.089	0.976
50mm $\lambda=0.022$ (+ 50mm low e cavity)	-0.110	0.963
100mm $\lambda=0.022$ (+ 50mm low e cavity)	-0.079	0.978

The f -value should be above 0.75 to minimise the risk of mould growth in dwellings.

Linear Thermal Transmittance (Ψ) and Temperature Factor (f -value)

Certificate No: E18-AL-2018

Issued : 2 February 2022

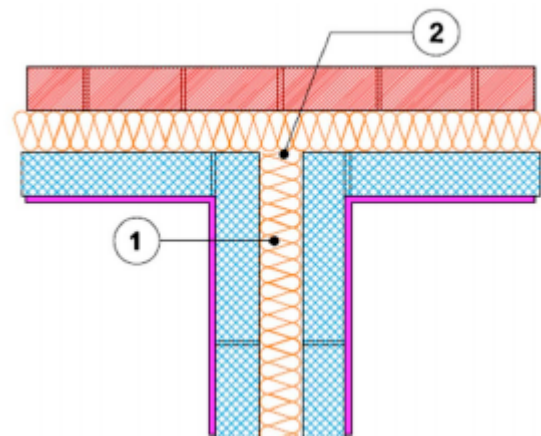
Issued by Plasmor Ltd

Party wall between dwellings (Table K1 Ref E18)

Calculated ψ -value = 0.025 – 0.043 W/mK*

Key Points

1. Fully fill party wall with 100mm acoustic mineral wool insulation ($k=0.036$)
2. Ensure continuity of insulation across the external wall/party wall abutment



Calculated ψ -values and f -values

Plasmor Aglite ($\lambda=0.31$) inner leaf and party wall block		
Cavity wall insulation	Ψ -value W/m·k*	f -value
100mm $\lambda=0.032$	0.039*	0.950
150mm $\lambda=0.032$	0.029*	0.964
50mm $\lambda=0.022$ (+ 50mm low e cavity)	0.043*	0.945
100mm $\lambda=0.022$ (+ 50mm low e cavity)	0.025*	0.966

*The value of ψ is applied to each dwelling

The f -value should be above 0.75 to minimise the risk of mould growth in dwellings.

Note: Plasmor Aglite block with 100mm cavity party wall does appear in Robust Details

Plasmor Ltd, PO Box 44, Womersley Road, Knottingley WF11 0DN
01977 673221 email: technical@plasmor.co.uk

Linear Thermal Transmittance (Ψ) and Temperature Factor (f -value)

Certificate No: E20(A)-AL-2018

Issued : 2 February 2022

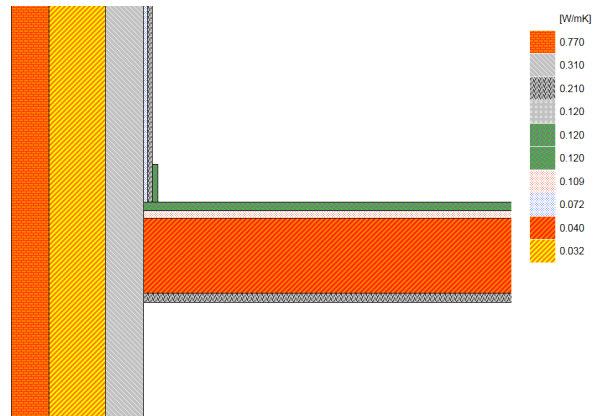
Issued by Plasmor Ltd

Exposed floor (timber) (Table K1 Ref E20)

Calculated ψ -value = 0.078 – 0.112 W/mK

Key Points

1. Ensure floor insulation tightly abuts the party wall



Calculated ψ -values and f -values

Garage below (inner leaf is blockwork below the floor, cavity wall insulation continues to ground floor)	Floor insulation 200mm ($\lambda=0.040$) between timber joists		
	Cavity wall insulation	Ψ -value W/m·k	f -value
100mm $\lambda=0.032$		0.079	0.867
150mm $\lambda=0.032$		0.081	0.876
50mm $\lambda=0.022$ (+ 50mm low e cavity)		0.078	0.860
100mm $\lambda=0.022$ (+ 50mm low e cavity)		0.080	0.877

Vehicle access below (inner leaf is brickwork below the floor, cavity wall insulation stops at floor level)	Floor insulation 200mm ($\lambda=0.040$) between timber joists	
Cavity wall insulation	Ψ-value W/m\cdotk	f-value
100mm $\lambda=0.032$	0.105	0.842
150mm $\lambda=0.032$	0.112	0.846
50mm $\lambda=0.022$ (+ 50mm low e cavity)	0.102	0.840
100mm $\lambda=0.022$ (+ 50mm low e cavity)	0.111	0.847

The f-value should be above 0.75 to minimise the risk of mould growth in dwellings.

Linear Thermal Transmittance (Ψ) and Temperature Factor (f -value)

Certificate No: E20(A)-AL-2018

Issued : 2 February 2022

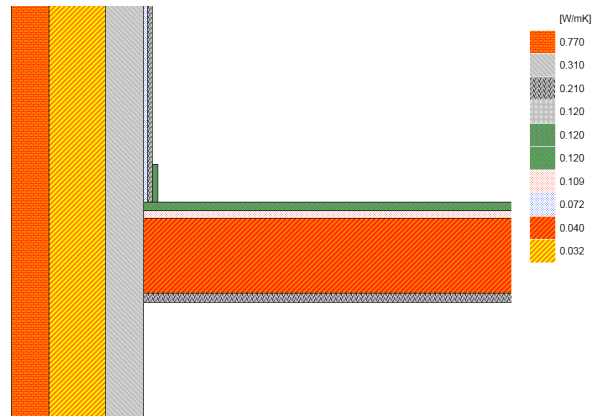
Issued by Plasmor Ltd

Exposed floor (timber) (Table K1 Ref E20)

Calculated ψ -value = 0.078 – 0.112 W/mK

Key Points

1. Ensure floor insulation tightly abuts the party wall



Calculated ψ -values and f -values

Garage below (inner leaf is blockwork below the floor, cavity wall insulation continues to ground floor)	Floor insulation 200mm ($\lambda=0.040$) between timber joists		
	Cavity wall insulation	Ψ -value W/m·k	f -value
100mm $\lambda=0.032$		0.079	0.867
150mm $\lambda=0.032$		0.081	0.876
50mm $\lambda=0.022$ (+ 50mm low e cavity)		0.078	0.860
100mm $\lambda=0.022$ (+ 50mm low e cavity)		0.080	0.877

Vehicle access below (inner leaf is brickwork below the floor, cavity wall insulation stops at floor level)	Floor insulation 200mm ($\lambda=0.040$) between timber joists	
Cavity wall insulation	Ψ-value W/m\cdotk	f-value
100mm $\lambda=0.032$	0.105	0.842
150mm $\lambda=0.032$	0.112	0.846
50mm $\lambda=0.022$ (+ 50mm low e cavity)	0.102	0.840
100mm $\lambda=0.022$ (+ 50mm low e cavity)	0.111	0.847

The f-value should be above 0.75 to minimise the risk of mould growth in dwellings.

Linear Thermal Transmittance (Ψ) and Temperature Factor (f -value)

Certificate No: E20(B)-AL-2018

Issued : 2 February 2022

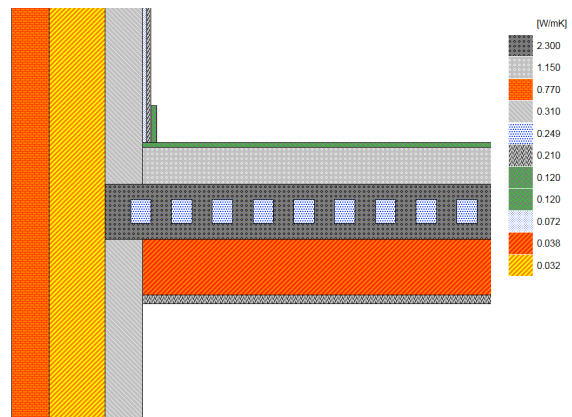
Issued by Plasmor Ltd

Exposed floor (concrete) (Table K1 Ref E20)

Calculated ψ -value = 0.143 – 0.306 W/mK

Key Points

1. Continue wall insulation across the floor abutment zone and down to ground level



Calculated ψ -values and f -values

<i>Garage below (inner leaf is blockwork below the floor, cavity wall insulation continues to ground level)</i>	Floor insulation 150mm ($\lambda=0.038$) below the hollowcore plank	
Cavity wall insulation	Ψ -value W/m·k	f -value
100mm $\lambda=0.032$	0.161	0.891
150mm $\lambda=0.032$	0.147	0.901
50mm $\lambda=0.022$ (+ 50mm low e cavity)	0.166	0.887
100mm $\lambda=0.022$ (+ 50mm low e cavity)	0.143	0.903

Drive-through (below exposed floor wall is two leaves of brickwork, insulation stops at floor level)	Floor insulation 150mm ($\lambda=0.038$) below the hollowcore plank	
Cavity wall insulation	Ψ-value W/m\cdotk	f-value
100mm $\lambda=0.032$	0.298	0.849
150mm $\lambda=0.032$	0.306	0.851
50mm $\lambda=0.022$ (+ 50mm low e cavity)	0.300	0.847
100mm $\lambda=0.022$ (+ 50mm low e cavity)	0.304	0.852

The f-value should be above 0.75 to minimise the risk of mould growth in dwellings.

Linear Thermal Transmittance (Ψ) and Temperature Factor (f -value)

Certificate No: E21(A)-AL-2018

Issued : 2 February 2022

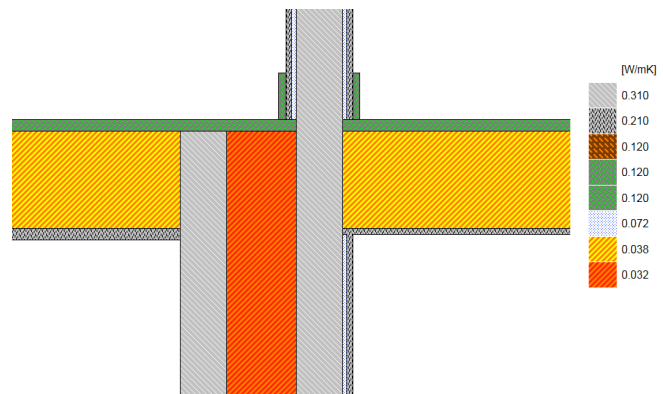
Issued by Plasmor Ltd

Exposed floor inverted (timber) (Table K1 Ref E21)

Calculated ψ -value = 0.051 – 0.162 W/mK

Key Points

1. Continue wall insulation across the floor abutment zone



Calculated ψ -values and f -values

<i>Garage below (inner leaf is blockwork below the floor, cavity wall insulation continues to ground level)</i>	Floor insulation 200mm ($\lambda=0.040$) between timber joists	
Cavity wall insulation	Ψ -value W/m·k	f -value
100mm $\lambda=0.032$	0.063	0.906
150mm $\lambda=0.032$	0.053	0.904
50mm $\lambda=0.022$ (+ 50mm low e cavity)	0.063	0.907
100mm $\lambda=0.022$ (+ 50mm low e cavity)	0.051	0.903

Drive-through (below exposed floor wall is two leaves of brickwork, insulation stops at floor level)	Floor insulation 200mm ($\lambda=0.040$) between timber joists	
Cavity wall insulation	Ψ-value W/m\cdotk	f-value
100mm $\lambda=0.032$	0.152	0.838
150mm $\lambda=0.032$	0.141	0.835
50mm $\lambda=0.022$ (+ 50mm low e cavity)	0.162	0.842
100mm $\lambda=0.022$ (+ 50mm low e cavity)	0.150	0.838

The f-value should be above 0.75 to minimise the risk of mould growth in dwellings.

Linear Thermal Transmittance (Ψ) and Temperature Factor (f -value)

Certificate No: E24(A)-AL-2018

Issued : 2 February 2022

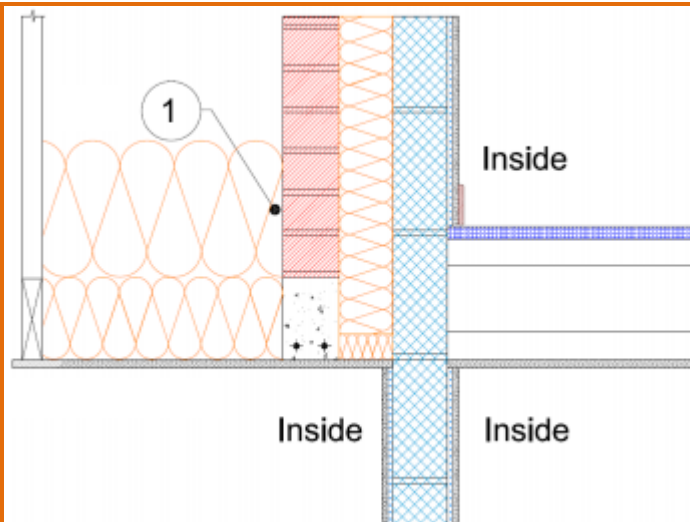
Issued by Plasmor Ltd

Eaves (insulation at ceiling level - inverted) Concrete lintel (Table K1 Ref E24)

Calculated ψ -value = -0.032 – 0.177 W/mK

Key Points

1.Ensure roof insulation tightly abuts the cavity wall



Calculated ψ -values and f -values

Bay window	300mm mineral wool insulation to ceiling ($\lambda=0.040$)	
Cavity wall insulation	Ψ -value W/m·k	f -value
100mm $\lambda=0.032$	0.166	0.891
150mm $\lambda=0.032$	0.172	0.887
50mm $\lambda=0.022$ (+ 50mm low e cavity)	0.169	0.891
100mm $\lambda=0.022$ (+ 50mm low e cavity)	0.177	0.885

Extension	450mm mineral wool insulation to ceiling ($\lambda=0.040$)	
Cavity wall insulation	Ψ-value W/m\cdotk	f-value
100mm $\lambda=0.032$	-0.014	0.938
150mm $\lambda=0.032$	0.078	0.947
50mm $\lambda=0.022$ (+ 50mm low e cavity)	-0.032	0.937
100mm $\lambda=0.022$ (+ 50mm low e cavity)	0.090	0.945

The f-value should be above 0.75 to minimise the risk of mould growth in dwellings.

Linear Thermal Transmittance (Ψ) and Temperature Factor (f -value)

Certificate No: E24(B)-AL-2018

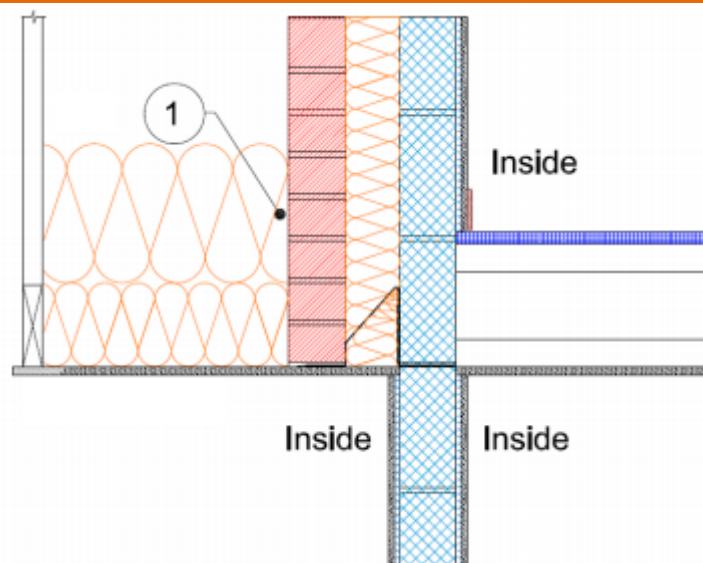
Issued : 2 February 2022

Issued by Plasmor Ltd

Eaves (insulation at ceiling level - inverted) Folded steel lintel (Table K1 Ref E24)
Calculated ψ -value = 0.208 – 0.253 W/mK

Key Points

1. Ensure roof insulation tightly abuts the cavity wall



Calculated ψ -values and f -values

Bay window	300mm mineral wool insulation to ceiling ($\lambda=0.040$)	
Cavity wall insulation	Ψ -value W/m \cdot k	f -value
100mm $\lambda=0.032$	0.209	0.904
150mm $\lambda=0.032$	0.246	0.919
50mm $\lambda=0.022$ (+ 50mm low e cavity)	0.212	0.902
100mm $\lambda=0.022$ (+ 50mm low e cavity)	0.252	0.917

Extension	450mm mineral wool insulation to ceiling ($\lambda=0.040$)	
Cavity wall insulation	Ψ -value W/m \cdot k	f-value
100mm $\lambda=0.032$	0.237	0.925
150mm $\lambda=0.032$	0.208	0.921
50mm $\lambda=0.022$ (+ 50mm low e cavity)	0.253	0.925
100mm $\lambda=0.022$ (+ 50mm low e cavity)	0.208	0.918

The f-value should be above 0.75 to minimise the risk of mould growth in dwellings.

Linear Thermal Transmittance (Ψ) and Temperature Factor (f -value)

Certificate No: E25(A)-AL-2018

Issued : 2 February 2022

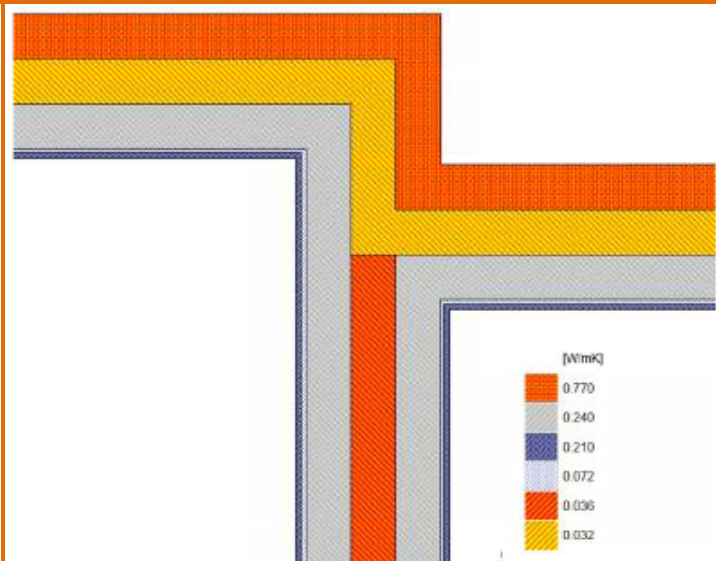
Issued by Plasmor Ltd

Party wall between dwellings (338mm stagger) (Table K1 Ref E25)

Calculated ψ -value = 0.086 – 0.141 W/mK*

Key Points

1. Fully fill party wall with acoustic mineral wool insulation ($k=0.036$)
2. Ensure continuity of insulation throughout the junction



Calculated ψ -values and f -values

Cavity wall insulation	Plasmor Aglite ($\lambda=0.31$) inner leaf and party wall block	
	Ψ -value W/m·k*	f -value
100mm $\lambda=0.032$	0.124*	0.920
150mm $\lambda=0.032$	0.088*	0.941
50mm $\lambda=0.022$ (+ 50mm low e cavity)	0.141*	0.913
100mm $\lambda=0.022$ (+ 50mm low e cavity)	0.086*	0.944

*Half of Psi value is applied to each dwelling.

The f -value should be above 0.75 to minimise the risk of mould growth in dwellings.

Linear Thermal Transmittance (Ψ) and Temperature Factor (f -value)

Certificate No: E25(B)-AL-2018

Issued : 2 February 2022

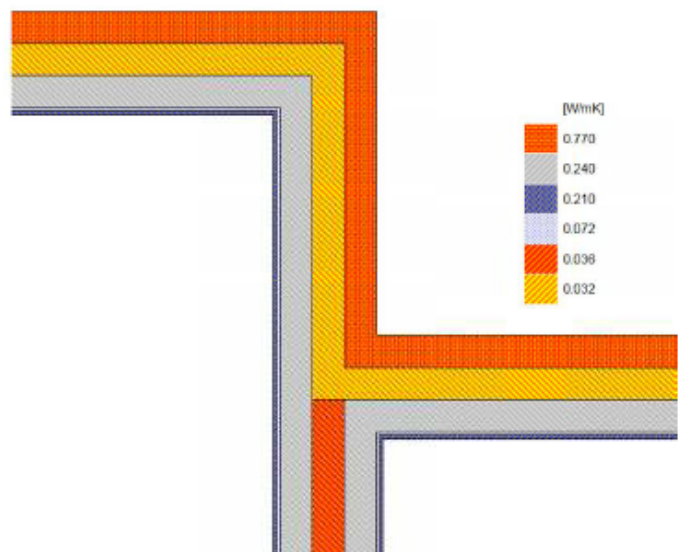
Issued by Plasmor Ltd

Party wall between dwellings (1013mm stagger) (Table K1 Ref E25)

Calculated ψ -value = 0.091 – 0.138 W/mK*

Key Points

1. Fully fill party wall with acoustic mineral wool insulation ($k=0.036$)
2. Ensure continuity of insulation throughout the junction



Calculated ψ -values and f -values

Cavity wall insulation	Plasmor Aglite ($\lambda=0.31$) inner leaf and party wall block	
	Ψ -value W/m·k*	f -value
100mm $\lambda=0.032$	0.122*	0.913
150mm $\lambda=0.032$	0.100*	0.933
50mm $\lambda=0.022$ (+ 50mm low e cavity)	0.138*	0.906
100mm $\lambda=0.022$ (+ 50mm low e cavity)	0.091*	0.938

*Half of Ψ value is applied to each dwelling

The f -value should be above 0.75 to minimise the risk of mould growth in dwellings.

Linear Thermal Transmittance (Ψ) and Temperature Factor (f -value)

Certificate No: P4-AL-2018

Issued : 2 February 2022

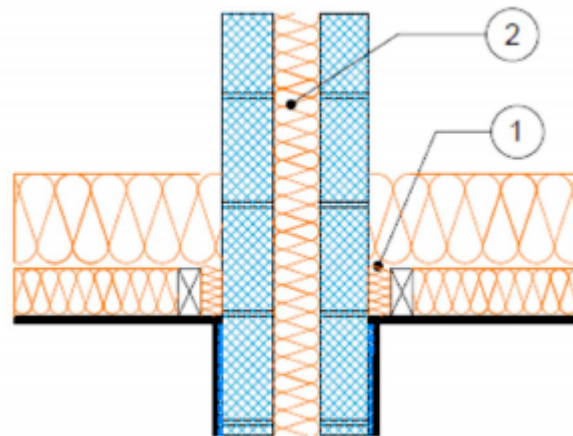
Issued by Plasmor Ltd

Roof (insulation at ceiling level) (Table K1 Ref P4)

Calculated ψ -value = 0.099 W/mK*

Key Points

- 1.Fill the space between the last joist and the party wall with insulation
- 2.Continue party wall insulation (k=0.036) 200mm above the top of the roof insulation



Calculated ψ -values and f -values

Roof insulation	Plasmor Aglite ($\lambda=0.31$) party wall block	
	Ψ -value W/m·k*	f -value
400mm mineral wool $\lambda=0.040$	0.099*	0.943

*Half of the Ψ value applies to each dwelling

The f -value should be above 0.75 to minimise the risk of mould growth in dwellings.

Linear Thermal Transmittance (Ψ) and Temperature Factor (f -value)

Certificate No: P5-AL-2018

Issued : 2 February 2022

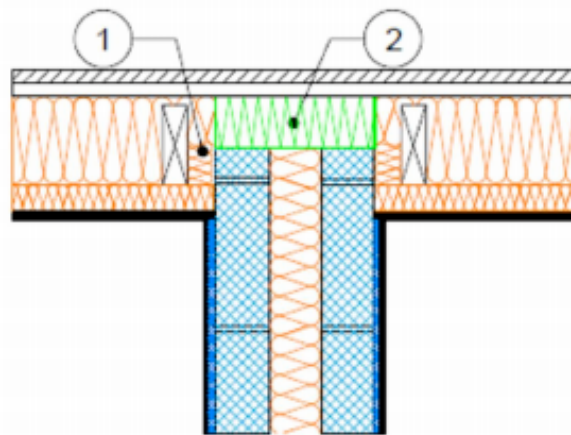
Issued by Plasmor Ltd

Roof (insulation at rafter level) (Table K1 Ref P5)

Calculated ψ -value = 0.054 W/mK*

Key Points

- 1.Fill the space between the last rafter and the party wall with insulation
- 2.Install wall head insulation $\lambda=0.022$



Calculated ψ -values and f -values

Roof insulation	Plasmor Aglite ($\lambda=0.31$) party wall block	
	Ψ -value W/m·k*	f -value
100mm rigid insulation between rafters $\lambda=0.022$, 50mm rigid insulation below the rafters $\lambda=0.022$ and plasterboard finish	0.054*	0.961

*For junctions shared by 2 or more dwellings, divide the Psi value by the number of dwellings involved and apply the proportion to each

The f -value should be above 0.75 to minimise the risk of mould growth in dwellings.

Linear Thermal Transmittance (Ψ) and Temperature Factor (f -value)

Certificate No: P8-AL-2018

Issued : 2 February 2022

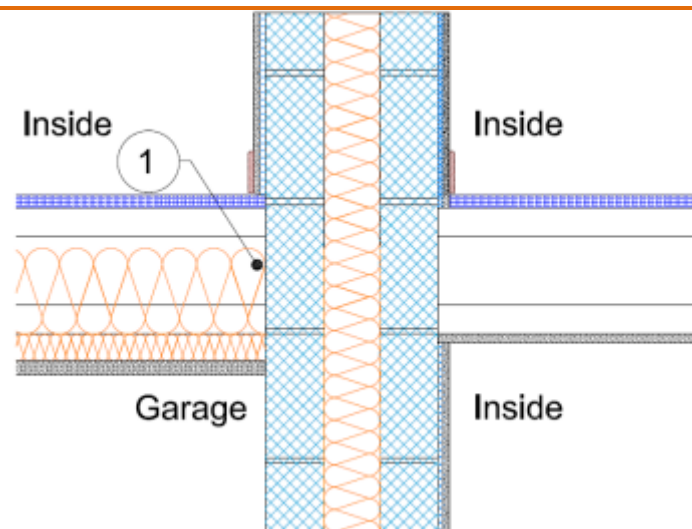
Issued by Plasmor Ltd

Exposed floor inverted (timber) (Table K1 Ref P8)

Calculated ψ -value = 0.094 – 0.115 W/mK*

Key Points

1. Ensure floor insulation tightly abuts the party wall



Calculated ψ -values and f -values

<i>Garage below (outer leaf is blockwork below the floor)</i>	Floor insulation 200mm ($\lambda=0.040$) between timber joists	
Cavity wall insulation	Ψ -value W/m·k	f -value
100mm $\lambda=0.032$	0.098*	0.916
150mm $\lambda=0.032$	0.094*	0.911
50mm $\lambda=0.022$ (+ 50mm low e cavity)	0.100*	0.915
100mm $\lambda=0.022$ (+ 50mm low e cavity)	0.097*	0.911

Vehicle access below (outer leaf is brickwork below the floor)	Floor insulation 200mm ($\lambda=0.040$) between timber joists	
Cavity wall insulation	Ψ-value W/m\cdotk	f-value
100mm $\lambda=0.032$	0.112*	0.908
150mm $\lambda=0.032$	0.107*	0.904
50mm $\lambda=0.022$ (+ 50mm low e cavity)	0.115*	0.908
100mm $\lambda=0.022$ (+ 50mm low e cavity)	0.109*	0.903

**For junctions shared by 2 or more dwellings, divide the Psi value by the number of dwellings involved and apply the proportion to each*

The f-value should be above 0.75 to minimise the risk of mould growth in dwellings.