

VERTIBLOCK

ARCHITECTURAL MASONRY

VERTIBLOCK in the Plasmor Architectural Masonry range represents an economical and appealing solution to achieve the 'stack-bonded' effect, increasingly favoured by architects and designers. **VERTIBLOCK** incorporates a central groove which gives the effect of two half blocks separated by a vertical mortar joint. As the blockwork is actually laid stretcher bond, the structural integrity of the wall is maintained whilst providing the regular geometric effect of stack bonding.

East Sta
Recept

VERTIBLOCK

ARCHITECTURAL MASONRY



COTSWOLD YELLOW



BARLEY



BUFF



RUSTIC RED



SLATE GREY

Vertiblock is available with a pleasing textured finish, in a wide range of colours. Internal and external Vertiblock Quoin blocks are available together with the facility to manufacture the other bespoke Vertiblock specials. 140mm Vertiblock is also available with the central groove on both sides facilitating single skin construction.

METRIC SIZES AND TYPES

Work Size 440mm x width x 215mm
Co-ordinating Size 450mm x width x 225mm

Type	100mm	140mm
Solid		
Multicore		
Quoins		
Internal Quoin		

PROPERTIES AND PERFORMANCE

Mean Compressive Strength

	Solid	17.5 N/mm ²
	Multicore	10.4 N/mm ²

Dry Density

	2000 Kg/m ³
--	------------------------

Thermal Value (at 3% moisture)

	Solid k	=	1.127W/m°C
	Cellular k	=	0.540W/m°C

Moisture Movement

	Not greater than 0.30mm/m
--	---------------------------

Sound Insulation

	Average reduction 43 - 50dB
--	-----------------------------

Fire Resistance

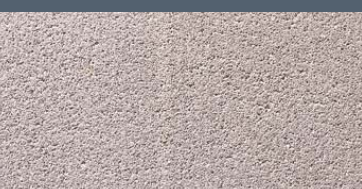
	Textured is manufactured from Class 1 Fire Resistant Aggregate as defined in BS 5628 Part 3 and complies with BS EN 1996-1-2005.
--	--



NATURAL WHITE



GREEN



HEATHER

TECHNICAL HELPLINE: 01977 673221