

SHOT BLASTED ARCHITECTURAL MASONRY

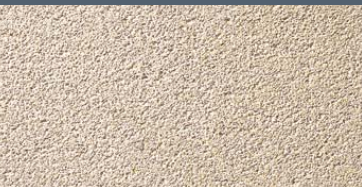
Probably the most widely chosen of all Plasmor Architectural Masonry ranges, **SHOT BLASTED** Architectural Masonry offers a coloured block with more of the aggregate exposed to give wall constructions a subtly coloured, naturally weathered look. The shot blasted finish achieves a pleasing overall effect with long-life appeal.



D.F.S
Furniture
Company plc.

SHOT BLASTED

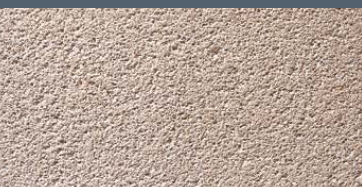
ARCHITECTURAL MASONRY



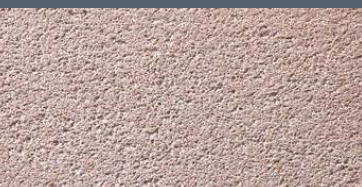
COTSWOLD YELLOW



BARLEY



BUFF



RUSTIC RED



SLATE GREY



NATURAL WHITE



GREEN



HEATHER

METRIC SIZES AND TYPES

Work Size 440mm x width x 215mm
Co-ordinating Size 450mm x width x 225mm

Type	90mm	100mm	140mm	190mm	215mm
Solid					
Hollow/ Cellular					
Multicore					

METRIC MODULAR SIZES AND TYPES

Work Size 390mm x width x 190mm
Co-ordinating Size 400mm x width x 200mm

Type	90mm	100mm	140mm	190mm	215mm
Solid					
Hollow/ Cellular					
Multicore					

PROPERTIES AND PERFORMANCE

Mean Compressive Strength

	Solid	17.5 N/mm ²
	Hollow/Cellular	10.4 N/mm ²
	Multicore	10.4 N/mm ²

Dry Density

	2000 Kg/m ³
--	------------------------

Thermal Value (at 3% moisture)

	Solid k	= 1.127W/m°C
	Cellular k	= 0.540W/m°C

Moisture Movement

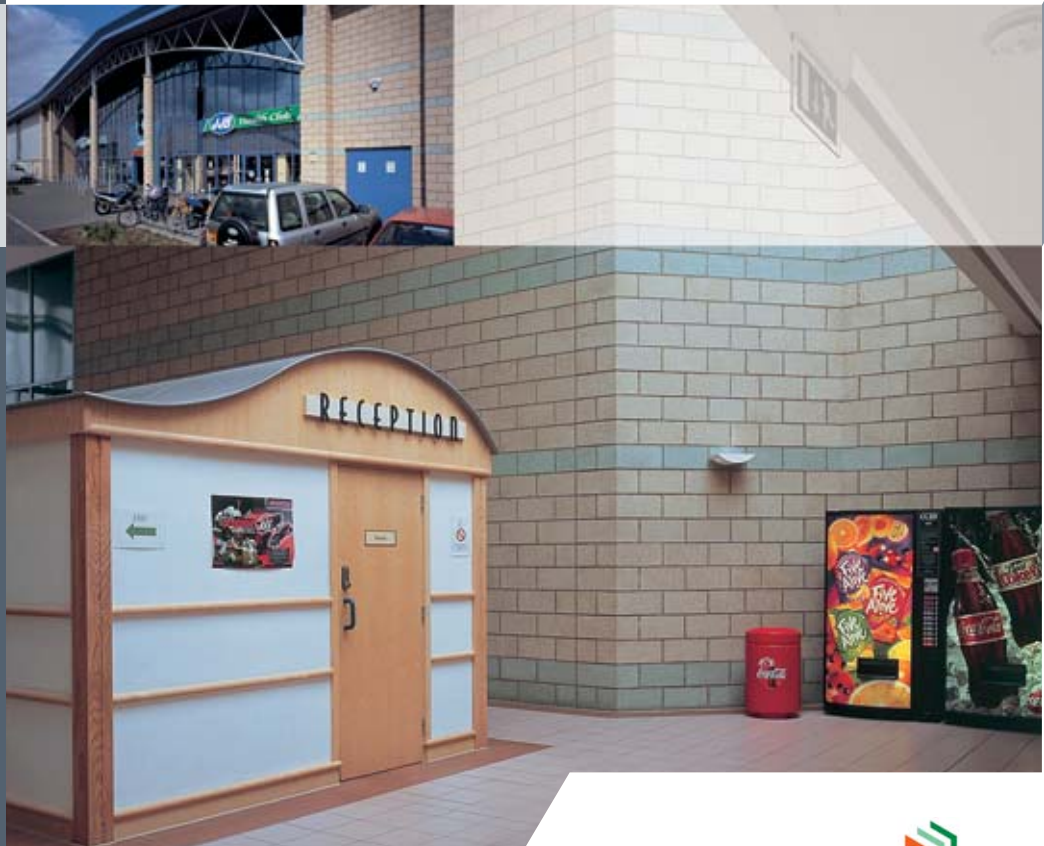
	Not greater than 0.30mm/m
--	---------------------------

Sound Insulation

	Average reduction 43 - 50dB
--	-----------------------------

Fire Resistance

Shot Blasted is manufactured from Class 1 Fire Resistant Aggregate as defined in BS 5628 Part 3 and complies with BS EN 1996-1-2005.



TECHNICAL HELPLINE: 01977 673221